

2016 North American International Livestock Exposition

NAILE Junior Shorthorn Show

139 head – Judge: Kyle Colyer, Bruneau, Idaho

by Kathleen Aschoff



Grand Champion Shorthorn Female, SULL Dream On 5158 ET and Junior Champion Female, exhibited by Sara Rose Sullivan, Dunlap, Iowa.



Reserve Grand Champion Shorthorn Female and Reserve Junior Champion Female, KOLT Marble The Roo 11 ET, exhibited by Kane Aegerter, Seward, Neb.

Junior Shorthorn Exhibitors were at the NAILE on Saturday and Sunday November 12th and 13th, 2016. The NAILE Junior Purebred Show was judged by Kyle Colyer of Bruneau, Idaho. Colyer judged 139 Purebred Females.

In the Purebred Show, **Grand Champion Female** distinctions was awarded to SULL Dream On 5158 ET exhibited by Sara Rose Sullivan of Dunlap, Iowa.

Reserve Grand Champion Female

was KOLT Marble The Roo 11 ET, exhibited by Kane Aegerter of Seward, Neb.

Bred and Owned Grand Champion Female honors went to SULL Bo's Margaret 5007 ET, shown by Sara Rose Sullivan.

SULL Red Knight Rose 6452 ET was named **Bred and Owned Reserve Grand Champion Female**, exhibited by Sara Rose Sullivan.

Purebred Shorthorn Female Division Champions:

Late Spring Heifer Calf Champion - SS Hope's Mirage ET, Samantha Marie Schrag of Marion, S.D.

Late Spring Heifer Calf Reserve Champion - CSF Demi 6100 HC ET, Adrienne Trennepohl of Middletown, Ind.

B&O Late Spring Heifer Calf Champion - SS Hope's Mirage ET, Samantha Marie Schrag.

B&O Late Spring Heifer Calf Reserve Champion - BRH CLF Proud Fool 1620, Ben Harner of Xania, Ohio.

Early Spring Heifer Calf Champion - CF Demi 650 SOL ET, Jacob Nikkel of McPherson, Kan.

Early Spring Heifer Calf Reserve Champion - CF FR Dream Lady 671 SO, Jacob Shoufler of Fortville, Ind.

B&O Early Spring Heifer Calf Champion - LWFS Carolines Pearl 161, Paige Wickard of Wilkinson, Ind.

B&O Early Spring Heifer Calf Reserve Champion - SS Max Rosa Rain ET, Samantha Marie Schrag.

Junior Heifer Calf Champion - SULL Red Knight Rose 6452 ET, Sara Rose Sullivan.

Junior Heifer Calf Reserve Champion - CF Dream Lady 626 AV X ET, Paige Wickard.

B&O Junior Heifer Calf Champion - SULL Red Knight Rose 6452 ET, Sara Rose Sullivan.

B&O Junior Heifer Calf Reserve Champion - Isabelle 605, Jaden Compton of Tipton, Iowa.

Senior Heifer Calf Champion - DKS N Muhl Mirage 1027T, Brittany Muhlenkamp of Celina, Ohio.

Senior Heifer Calf Reserve Champion - DKS N Muhl Mirage 1027 1, Brittany Muhlenkamp.

B&O Senior Heifer Calf Champion - DKS N Muhl Mirage 1027T, Brittany Muhlenkamp.

B&O Senior Heifer Calf Reserve Champion - DKS N Muhl Mirage 1027 1, Brittany Muhlenkamp.

Intermediate Champion Female - SULL Dream Lady 5445C ET, Kinley Kreis of Adamsville, Ohio.

Reserve Intermediate Champion Female - SULL Mary's Roses 5763C ET, Karly Kirkpatrick of Avilla, Ind.

B&O Intermediate Champion Female - ML FHF Princess Leia, Wilson Matthews of Catersville, Ga.

Junior Champion Female - SULL Dream On 5158 ET, Sara Rose

2016 North American International Livestock Exposition



Bred & Owned Grand Champion Shorthorn Female, SULL Bo's Margaret 5007 ET, exhibited by Sara Rose Sullivan, Dunlap, Iowa.



Bred & Owned Reserve Grand Champion Shorthorn Female, SULL Red Knight Rose 6452 ET, exhibited by Sara Rose Sullivan, Dunlap, Iowa.

Sullivan.

Reserve Junior Champion Female - KOLT Marble The Roo 11 ET, Kane Aegerter.

B&O Junior Champion Female - SULL Bo's Margaret 5007 ET, Sara Rose Sullivan.

B&O Reserve Junior Champion Female - Layla's Royal Asset 1183, Mya Lenke Hetrick of Fremont, Ohio.

Senior Champion Female - BOY Cumberland Love 501, Brandee Painter of Hebron, Ohio.

Reserve Senior Champion Female - CYT DSC Max Rosa ET, Sara Rose Sullivan.

B&O Senior Champion Female - Lorenz's Ghost 15, Joshua Lorenz of Grant Park, Ill.

Purebred Female Class Placings:

Late Spring Heifer Calves - (3 entries): 1) SS Hope's Mirage ET exhibited by Samantha Marie Schrag; 2) BRH CLF Proud Fool 1620 exhibited by Ben Harner; 3) RHS Eldorado Queen 5246 ET exhibited by

Alexis Hanson.

Late Spring Heifer Calves - (5 entries): 1) CSF Demi 6100 HC ET exhibited by Adrienne Trennepohl; 2) KSC Proud Cherry K06 ET exhibited by Michael Poole; 3) CF Cumberland 6115 SOL ET exhibited by Kevin Hesser.

Early Spring Heifer Calves - (5 entries): 1) SS Max Rosa Rain ET exhibited by Samantha Marie Schrag; 2) 2G Demi BS 10D ET exhibited by Heather Berry; 3) CLF Proud Diva 1612 ET exhibited by Brandon Barr.

Early Spring Heifer Calves - (4 entries): 1) LWFS Carolines Pearl 161 exhibited by Paige Wickard; 2) Waymar Ut Hot Sable exhibited by Alyson Utegg; 3) MFF Cumberland 95 ET exhibited by Dawson Ward.

Early Spring Heifer Calves - (4 entries): 1) CF FR Dream Lady 671 SO exhibited by Jacob Shoufler; 2) Little Cedar Lucy 1628 ET exhibited by Rae Gresso; 3) CYT Max Rosa 6128 ET exhibited by Sheridan Fox.

Early Spring Heifer Calves - (6 entries): 1) CF V8 Mona Lisa Reward 660 ET exhibited by Miller Smith; 2) CF Dream Lady 663 AV X ET exhibited by David Smith; 3) MAV Winnie 620D exhibited by Payton Vogel.

Early Spring Heifer Calves - (4 entries): 1) CF CSF Cumberland 655 RK ET exhibited by Xavier Ferris; 2) BONL Ruby Rose 606D exhibited by Brady Tracy; 3) PRNL Augusta Pride 312 ET exhibited by Anna G. Parnell.

Early Spring Heifer Calves - (4 entries): 1) CF Demi 650 SOL ET exhibited by Jacob Nikkel; 2) FFS Val's Princess 6F02 exhibited by Zachary Fanning; 3) J A Hot Delila HC 6J07 exhibited by Ty Jordan Harden.

Junior Heifer Calves - (4 entries): 1) CF Mirage 641 EL ET exhibited by Sarah E Fry; 2) SLF Flying Dottie ET exhibited by Mason Edwards; 3) CF JBC Caroline 645 HC ET exhibited by Cole Whisman.

Junior Heifer Calves - (5 entries): 1) SULL Knight Rose 6452 ET exhibited by Sara Rose Sullivan; 2) Isabelle 605 exhibited by Jaden Compton; 3) Hahn Diamond T22D ET exhibited by Dustin Pitcock.

Junior Heifer Calves - (6 entries): 1) CF Dream Lady 626 AV X ET exhibited by Paige Wickard; 2) FPK

L
O
U
I
S
I
A
N
S
H
O
R
T
H
O
R
N
C
O
U
N
T
R
Y

2016 North American International Livestock Exposition

Cindy Beauty 161 exhibited by Fulton Kennedy; 3) Bergs Cheri Picture PE E ET exhibited by Payton Hitchings.

Junior Heifer Calves – (6 entries): 1) SULL Miss America 6073D ET exhibited by Sara Rose Sullivan; 2) CSF Lucky Charm 601 HC ET exhibited by Hailey Jester; 3) CF Cumberland 612 BS X ET exhibited by Emily Dahse.

Junior Heifer Calves – (6 entries): 1) CSF Margie 611 HC ET exhibited by Mark Inskeep; 2) Little Cedar Lady Luck ET exhibited by Mason Edwards; 3) Lily's Roan Princess exhibited by Madilynn Barker.

Winter Heifer Calves – (5 entries): 1) MM Darlene MSC 158C exhibited by Clayton Poppe; 2) FFS Hot Rosie 15 exhibited by Zachary Fanning; 3) SULL Mona Lisa 5794 ET exhibited by Kyle Piscione.

Senior Heifer Calves – (5 entries): 1) DKSN Muhl Mirage 1027T exhibited by Brittany Muhlenkamp; 2) DKSN Muhl Mirage 1027 1 exhibited by Brittany Muhlenkamp; 3) CF Countess TP 5130 ET exhibited by Emily Hoene.

Senior Heifer Calves – (4 entries): 1) FOX Caroline 515 ET exhibited by Sheridan Fox; 2) MM Pearl MSC 132C exhibited by Cole Spencer; 3) MBS Red Sue's Reward 524 exhibited by Clayton A Miller.

Senior Heifer Calves – (6 entries): 1) RHS Dream Girl 975 ET exhibited by Alexis Hanson; 2) WHR CH Cecilia

5922 ET exhibited by Eli Smallwood; 3) WHR SRVM Cecilia 5919 ET exhibited by Kyle Jones.

Summer Yearling Females – (3 entries): 1) Lorenz's Mona Lisa 15 exhibited by Grace Rinker; 2) MM Belly Dancer MSC 514C exhibited by Clayton Poppe; 3) Waymar Fabulous Tina 510 exhibited by Alyson Utegg.

Late Spring Yearling Females – (6 entries): 1) SULL Mary's Roses 5763C E ET exhibited by Karly Kirkpatrick; 2) Shoufler Roxanne UPG 1530 exhibited by Mollie McCulloh; 3) Weik Wildest Dreams ET exhibited by Georgia Cozzitorto.

Late Spring Yearling Females – (8 entries): 1) SULL Dream Lady 5445C ET exhibited by Kinley Kreis; 2) KOLT Simple Pride 2289 E ET exhibited by Kendall Nelson; 3) DAF Shanie CD09 exhibited by Robert Rogers.

Early Spring Yearling Females – (5 entries): 1) GCC Turners Margie 542 E ET exhibited by Gavin D Cender; 2) WFSC Sara Rose 12C ET exhibited by Carley Baumeister; 3) ACF Queen's Sadie exhibited by Amanda Annett.

Early Spring Yearling Females – (5 entries): 1) KOLT Marble The Roo 11 ET exhibited by Kane Aegerter; 2) SULL Lavish Tina ET exhibited by Craig Bratcher; 3) SULL Crystal Ice 5717 ET exhibited by Ali Muir.

Early Spring Yearling Females – (6 entries): 1) SULL Bo's Margaret 5007 ET exhibited by Sara Rose Sullivan; 2)

CF CSF Margie 575 HC ET exhibited by David Smith; 3) STECK Augusta Pride 505 E ET exhibited by Allison Dragstrem.

Early Spring Yearling Females – (6 entries): 1) SULL Dream On 5158 ET exhibited by Sara Rose Sullivan; 2) SULL Rose Mary 5362 ET exhibited by Jessica Millenbaugh; 3) FR 2Q's Red Queen ET exhibited by Xavier Ferris.

Junior Yearling Females – (4 entries): 1) SULL Edgy Dream Lady ET exhibited by John Gellerman; 2) SULL Cherri Moon 5993C ET exhibited by Kathy Lehman; 3) CF Cumberland 535 SOL ET exhibited by Miller Smith.

Junior Yearling Females – (7 entries): 1) CYT DSC Max Rosa ET exhibited by Sara Rose Sullivan; 2) CF V8 Mona Lisa Smile 526 exhibited by John Reasor; 3) SULL Cherri Commodity ET exhibited by Sara Rose Sullivan.

Junior Yearling Females – (5 entries): 1) Boy Cumberland Love 501 exhibited by Brandee Painter; 2) Turner's GCC Margie ET exhibited by Mattie Williams; 3) Lorenz's Ghost 15 exhibited by Joshua Lorenz.

Senior yearling Females – (2 entries): 1) WHR SRVM Cecilia 4N07 ET exhibited by Cameron Fallon; 2) Jenna exhibited by Danielle Wood Seddon. ☐



Grand Champion Bull and winner of the George Garvin Brown Memorial Trophy.



l to r: Shelby Armstrong, Alternate Lassie Queen and Tejlor Strope, 2016-2017 National Shorthorn Lassie Queen.



Late Spring Heifer Calf Champion, SS Hope's Mirage ET, exhibited by Samantha Marie Schrag, Marion, S.D.



Late Spring Heifer Calf Reserve Champion, CSF Demi 6100 HC ET, exhibited by Adrianne Trennepohl, Middletown, Ind.



Early Spring Heifer Calf Champion, CF Demi 650 SOL ET, exhibited by Jacob Nikkel, McPherson, Kan.



Early Spring Heifer Calf Reserve Champion, CF FR Dream Lady 671 SO, exhibited by Jacob Shoufler, Fortville, Ind.



Junior Heifer Calf Champion, SULL Red Knight Rose 6452 ET, exhibited by Sara Rose Sullivan, Dunlap, Iowa.



Junior Heifer Calf Reserve Champion, CF Dream Lady 626 AV X ET, exhibited by Paige Wickard, Wilkinson, Ind.



Senior Heifer Calf Champion, DKSN Muhl Mirage 1027T, exhibited by Brittany Muhlenkamp, Celina, Ohio.



Senior Heifer Calf Reserve Champion, DKSN Muhl Mirage 1027 1, exhibited by Brittany Muhlenkamp, Celina, Ohio.



Intermediate Champion Female, SULL Dream Lady 5445C ET, exhibited by Kinley Kreis, Adamsville, Ohio.



Reserve Intermediate Champion Female, SULL Mary's Roses 5763C ET, exhibited by Karly Kirkpatrick, Avilla, Ind.



Senior Champion Female, BOY Cumberland Love 501, exhibited by Brandee Painter, Hebron, Ohio.

Not pictured:
Reserve Senior Champion Female, CYT DSC Max Rosa ET, exhibited by Sara Rose Sullivan, Dunlap, Iowa.

HELP SUPPORT THE JUNIORS

Funding the Future Online Sale • www.showstock.com

February 21, 2017

2017 National Junior Show & Youth Conference

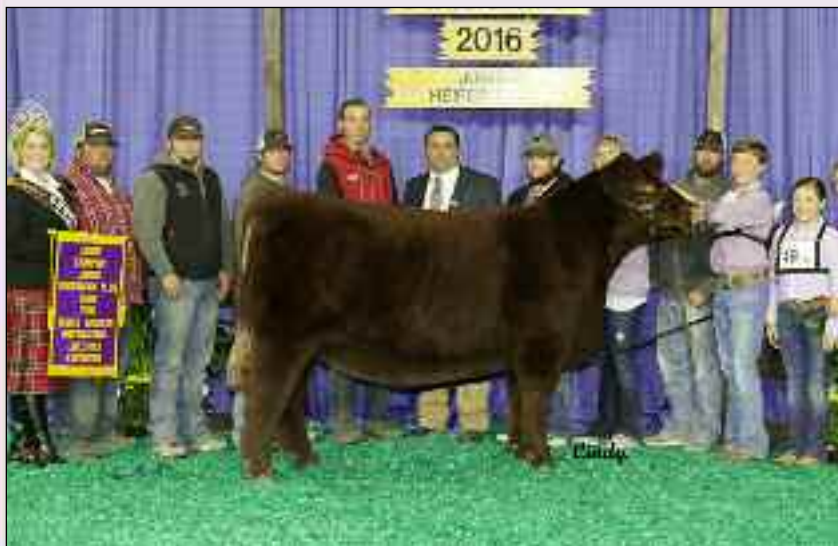
July 3-8 (Check-In: July 4)

Tulsa, Oklahoma

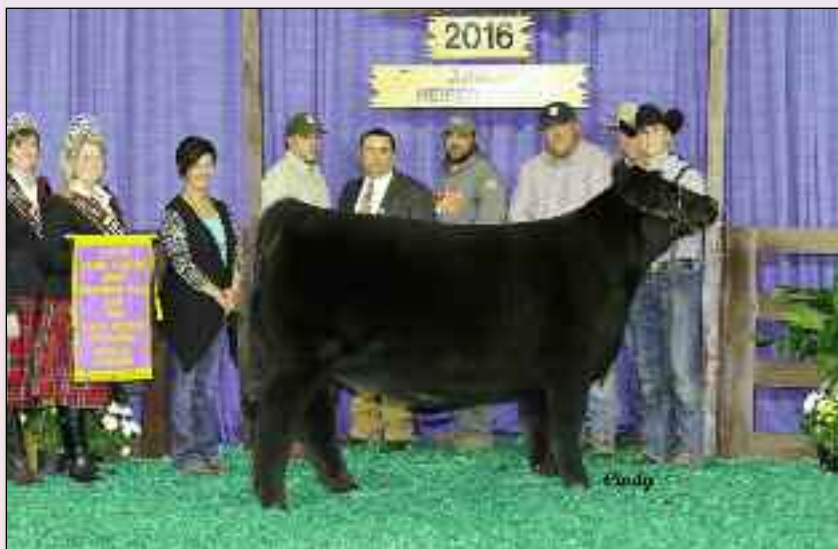
NAILE Junior ShorthornPlus Show

35 head - Judge: Blake Bloomberg, Stillwater, Okla.

by Kathleen Aschoff



Grand Champion ShorthornPlus Female and Senior Champion Female, was SULL Tamale's Tale 5186C ET, exhibited by Stewart Skiles, Dalhart, Texas.



Reserve Grand Champion ShorthornPlus Female and Junior Champion Female, SULL Tamale's Right ET, exhibited by Kane Aegerter, Seward, Neb.

Junior Shorthorn Exhibitors were at the NAILE on Saturday and Sunday November 12th and 13th, 2016. On Sunday Blake Bloomberg of Stillwater, Okla. evaluated 35 ShorthornPlus Females.

In the ShorthornPlus Show, **Grand Champion Female** was SULL Tamale's Tale 5186C ET, exhibited by Stewart Skiles of Dalhart, Texas.

SULL Tamale's Right ET was named **Reserve Grand Champion Female** shown by Kane Aegerter of Seward,

Neb.

Bred and Owned Grand Champion Female for the ShorthornPlus show went to KOLT Blue The Roo 940, exhibited by Kane Aegerter.

SULL Tamale Too 6000D ET was awarded **Bred and Owned Reserve Grand Champion Female**, exhibited by Sara Rose Sullivan of Dunlap, Iowa.

ShorthornPlus Female Division Champions:

Late Spring Heifer Calf Champion

- SS Black Dixie 6106, Samantha Marie Schrag of Marion, S.D.

Late Spring Heifer Calf Reserve Champion - WLTZ Rose 616D, Lily Haerberle of Morristown, Ind.

B&O Late Spring Heifer Calf Champion - Lay's Lucille L43, Aaron Lay of Madisonville, Tenn.

Early Spring Heifer Calf Champion - KOLT Blue The Roo 940, Kane Aegerter.

Early Spring Heifer Calf Reserve Champion - SULL Crystal's Style 6998 ET, Taylor Morbitzer of Grove City, Ohio.

B&O Early Spring Heifer Calf Champion - KOLT Blue The Roo 940, Kane Aegerter.

B&O Early Spring Heifer Calf Reserve Champion - Caligo Onyx Rose ET, Kayla Fogg of Rushville, Ind.

Junior Heifer Calf Champion - SULL Crystal's Judy 6997D ET, Katey Mize of North Manchester, Ind.

Junior Heifer Calf Reserve Champion - SULL Tamale Too 6000D ET, Sara Rose Sullivan.

B&O Junior Heifer Calf Champion - SULL Tamale Too 6000D ET, Sara Rose Sullivan.

B&O Junior Heifer Calf Reserve Champion - Caligo Wild Flower, Kayla Fogg of Rushville, Ind.

Senior Heifer Calf Champion - BOY Skiles Corpus Christi, Clayton Boyert of Seville, Ohio.

Senior Heifer Calf Reserve Champion - CF NNN Caroline 5141 ET, Mark Inskeep of Lafayette, Ind.

Intermediate Champion Female - DMW Black Cherrri, Robert Rogers of Kendallville, Ind.

Reserve Intermediate Champion Female - Roan Queen 832C, Will Shelby of Madill, Okla.

B&O Intermediate Champion Female - Red Road of Diamonds, Orry Williams of Elizabethtown, Ky.

Junior Champion Female - SULL Tamale's Right ET, Kane Aegerter.

Reserve Junior Champion Female - CF CSF Monopoly Queen 551, Scott Hesser of Leesburg, Ind.

Senior Champion Female - SULL Tamale's Tale 5186C ET, Stewart Skiles.

ShorthornPlus Class Placings:

Late Spring Heifer Calves - (3 entries): 1) SS Black Dixie 6106 exhibited by Samantha Marie Schrag;



Bred & Owned Grand Champion ShorthornPlus Female, was KOLT Blue The Roo 940, exhibited by Kane Aegerter, Seward, Neb.



Bred & Owned Reserve Grand Champion ShorthornPlus Female, SULL Tamale Too 6000D ET, exhibited by Sara Rose Sullivan, Dunlap, Iowa.

2) WLTZ Rose 616D exhibited by Lily Haeberle; 3) Lay's Lucille L43 exhibited by Aaron Lay.

Early Spring Heifer Calves – (2 entries): 1) KOLT Blue The Roo 940 exhibited by Kane Aegerter; 2) DKSN Muhl Solution Girl 4 exhibited by Taylor N Muhlenkamp.

Early Spring Heifer Calves – (5 entries): 1) SULL Crystal's Style 6998 ET exhibited by Taylor Morbitzer; 2) CSF Strawberry 667 ET exhibited by Rylan Jester; 3) MFJ Cumberland 94 ET exhibited by Molly Hunt.

Junior Heifer Calves – (5 entries): 1) SULL Crystal's Judy 6997D ET exhibited by Katey Mize; 2) Miss Izzy Rae 1D ET exhibited by Sara Rose Sullivan; 3) SULL Miss Izzy 6615D ET exhibited by Sara Rose Sullivan.

Junior Heifer Calves – (2 entries): 1) SULL Tamale Too 6000D ET

exhibited by Sara Rose Sullivan; 2) CF Proud Blue 625 ET exhibited by Scott Hesser.

Winter Heifer Calves – (1entry): 1) CF NNN Caroline 5141 ET exhibited by Mark Inskeep.

Senior Heifer Calves – (2 entries): 1) BOY Skiles Corpus Christi exhibited by Clayton Boyert; 2) OLY Goose'n Around 01C E ET exhibited by Karli Berkheimer.

Summer Yearling Females – (1 entry): 1) DMW Black Cherri exhibited by Robert Rogers.

Late Spring Yearling Females – (3 entries): 1) Roan Queen 832C exhibited by Will Shelby; 2) FF Isabella exhibited by Kacey Wilkerson; 3) Red Road of Diamonds exhibited by Orry Williams.

Early Spring Yearling Females – (3 entries): 1) SULL Tamale's Right ET

exhibited by Kane Aegerter; 2) S/T Beauty 591C ET exhibited by Bailey Harvey; 3) JWVB Daniella Mirage ET exhibited by Wade Burris.

Early Spring Yearling Females – (7 entries): 1) CF CSF Monopoly Queen 551 exhibited by Scott Hesser; 2) SULL Demi's Style 5369 ET exhibited by Abbie Collins; 3) KSD Shinning Mirage 715 ET exhibited by Molly Hunt.

Junior Yearling Females – (1 entry): 1) SULL Tamale's Tale 5186C 

JUNIOR NATIONAL DEADLINES

May 1: Ownership Deadline

May 1: Early Entry Deadline

May 15: Final Entry Deadline

Do You Receive the Shorthorn Insider E-Newsletter?

Be sure to sign up for the bi-weekly e-newsletter from the ASA at www.shorthorn.org!

Don't miss out on up to date Shorthorn news sent right to your inbox. Sign up today!



Late Spring Heifer Calf Champion, SS Black Dixie 6106, exhibited by Samantha Marie Schrag, Marion, S.D.



Late Spring Heifer Calf Reserve Champion, WLTZ Rose 616D, exhibited by Lily Haeberle, Morristown, Ind.



Early Spring Heifer Calf Champion, KOLT Blue the Roo 940, exhibited by Kane Aegerter, Seward, Neb.



Early Spring Heifer Calf Reserve Champion, SULL Crystal's Style 6998 ET, exhibited by Taylor Morbitzer, Grove City, Ohio.



Junior Heifer Calf Champion, SULL Crystal's Judy 6997D ET, exhibited by Katey Mize, North Manchester, Ind.



Junior Heifer Calf Reserve Champion, SULL Tamale Too 6000D ET, exhibited by Sara Rose Sullivan, Dunlap, Iowa.



Senior Heifer Calf Champion, BOY Skiles Corpus Christi, exhibited by Clayton Boyert, Seville, Ohio.



Senior Heifer Calf Reserve Champion, CF NNN Caroline 5141 ET, exhibited by Mark Inskip, Lafayette, Ind.



Intermediate Champion Female, DMW Black Cherrri, exhibited by Robert Rogers, Kendallville, Ind.



Reserve Junior Champion Female, CF CSF Monopoly Queen 551, exhibited by Scott Hesser, Leesburg, Ind.

Not pictured:
Reserve Intermediate Champion Female, Roan Queen 832C, exhibited by Will Shelby, Madill, Okla.

**International Year Code:
2017-E**