

NAILE Junior Shorthorn Show

Judge: Jeff Gooden, Lone Jack, Mo.

by Emily Velisek



Grand Champion Shorthorn Female and Senior Champion Female, was SULL Red Knight Rose 6452 ET, exhibited by Sara Sullivan, Dunlap, Iowa. She also claimed the title of Bred & Owned Grand Champion Shorthorn Female.



Reserve Grand Champion Shorthorn Female and Reserve Senior Champion Female, was CF CSF Margie 611 HC ET, exhibited by Mark Inskeep of Lafayette, Ind.

On Sunday, November 12, 2017, Shorthorn Junior exhibited the females to Judge Jeff Gooden of Lone Jack, MO. Gooden evaluated a total of 153 females during the Junior Purebred Show at the NAILE.

Grand Champion Shorthorn Female & Senior Champion Female honors went to SULL Red Knight Rose 6452 ET, owned by Sara Sullivan of Dunlap,

Iowa. She also claimed the title of **B&O Grand Champion Female**.

Reserve Grand Champion Shorthorn Female & Reserve Senior Champion Female was CF CSF Margie 611 HC ET, owned by Mark Inskeep of Lafayette, Ind.

B&O Reserve Grand Champion Shorthorn Female & B&O Junior Heifer Calf Champion was SFF Nebraska Queen 701 EV, owned by

Miller Smith of Pendleton, Ind.

Division Winners:
Junior Shorthorn Female Show Divisions:

Late Spring Heifer Calf Champion - CF Max Rosa 7100 HC X ET, David Smith, Boulder, Colo.

Late Spring Heifer Calf Reserve Champion - SS Destinys Halo 796, Samantha Schrag, Marion, S.D.

B&O Late Spring Heifer Calf Champion - SS Destinys Halo 796, Samantha Schrag, Marion, S.D.

B&O Late Spring Heifer Calf Reserve Champion - Athenna Princess's Warrior 1190, Mya Hetrick, Fremont, Ohio.

Early Spring Heifer Calf Champion - CF HHF Margie 750 HC X ET, Jacob Nikkel, McPhearson, Kan.

Early Spring Heifer Calf Reserve Champion - MFS Simply Diva The Roo 30E ET, Reid Utterback, Elwood, Ind.

B&O Early Spring Heifer Calf Champion - Kane Red Reba 613E, Kane Aegerter, Seward, Neb.

B&O Early Spring Heifer Calf Reserve Champion - LBT Cindy Beauty 1722 ET, Logan Test, Cedarville, Ohio.

Junior Heifer Calf Champion - SULL Martha's Bo 7974E ET, Madison McCormick, Dunlap, Iowa.

Junior Heifer Calf Reserve Champion - CF CSF Max Rosa 725 RR X ET, Sara Sullivan.

B&O Junior Heifer Calf Reserve Champion - TRN Red Foxy 75 ET, Gavin Cender, Mahomet, Ill.

Senior Heifer Calf Champion - CF Dream Lady 6127 AV ET, Elley Inskeep, Lafayette, Ind.

Senior Heifer Calf Reserve Champion - AF SL Revival 1648, Cyrus Kornegay, Tulsa, Okla.

B&O Senior Heifer Calf Champion - VSC Destiny Best Asset 57, Molly Williams, Gamaliel, Ky.

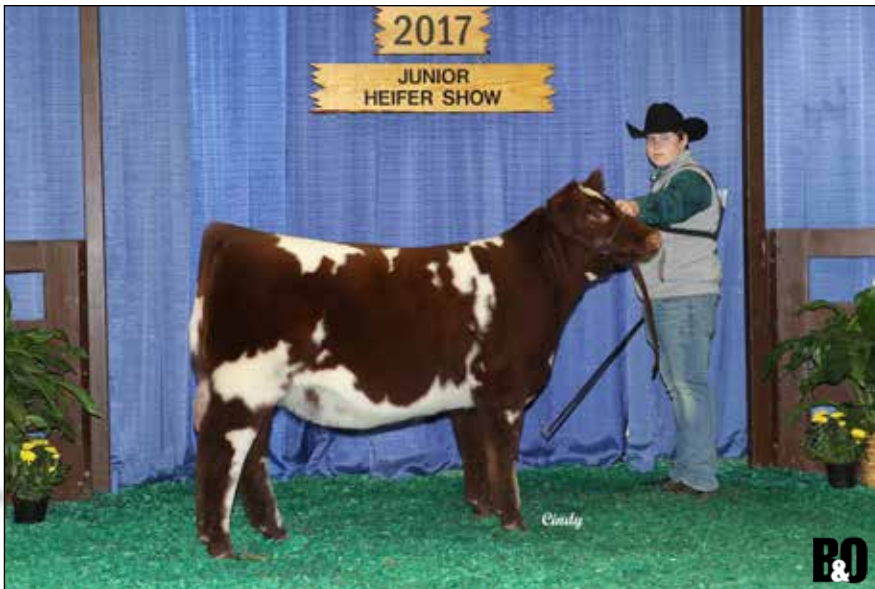
B&O Senior Heifer Calf Reserve Champion - MBS Sunshine's Reward 1608, Clayton Miller, Beecher City, Ill.

Intermediate Champion Female - CF CSF Demi 6100 HC ET, Adrienne Trennepohl, Middletown, Ind.

Reserve Intermediate Champion Female - Fancy As Hale PAH 116, Blake Pillars, Martin, Mich.

B&O Intermediate Champion Female - BRH CLF Proud Fool 1620, Ben Harner, Xenia, Ohio.

B&O Reserve Intermediate Champion Female - M-L FHF Princess Madison, Wilson Matthews, Cartersville, Ga.



B&O Reserve Grand Champion Shorthorn Female and B&O Junior Heifer Calf Champion, was SFF Nebraska Queen 701 EV, owned by Miller Smith of Pendleton, Ind.



Junior Champion Female - CF CSF Demi 650 SOL ET, Jake Nikkel, McPherson, Kan.

Reserve Junior Champion Female - SULL Dream Lady 6197D ET, Kane Aegerter, Seward, Neb.

B&O Junior Champion Female - MM Robjoy Lily 3Z 80D, Clayton Poppe, Jerseyville, Ill.

B&O Reserve Junior Champion Female - LGF Ruby's Hot Emerald, John Gellerman, Petersburg, Ill.

B&O Reserve Senior Champion Female - PRNL Simply Southern 120, Anna Parnell, Stanton, Ala.

Junior Shorthorn Female Class Placings:

Late Spring Heifer Calves - (7 entries): 1) SS Destiny's Halo 796 exhibited by Samantha Schrag; 2) RSF Zoey 1E exhibited by Anna Parnell; 3) Little Cedar Lakota Rose 1722 exhibited by Katie Francisco.

Late Spring Heifer Calves - (8 entries): 1) CF Max Rosa 7100 HC X ET exhibited by David Smith; 2) R-C Proud Athena 703 ET exhibited by Piper Campbell; 3) JAMS Patsy 3 exhibited by Belle Brautigam.

Early Spring Heifer Calves - (9 entries): 1) Little Cedar Rose Mary 1718 ET exhibited by Charlie Sutherland; 2) LCCC WF Final Rosette 1704 exhibited by Kelsey Francisco; 3) CF HHF Margie 799 HC X ET exhibited by Kevin Hesser.

Early Spring Heifer Calves - (10 entries): 1) MFS Simply Diva The Roo 30E ET exhibited by Reid Utterback; 2) Kane Red Reba 613E exhibited by Kane Aegerter; 3) CF V8 Mona Lisa Reward 782 SOL ET exhibited by Ryan Wickard.

Early Spring Heifer Calves - (8 entries): 1) CF V8 Mona Lisa Reward 780 SOL X ET exhibited by Miller Smith; 2) CSF Myrtle Bo 705 exhibited by Rosemary Thompson; 3) CF CSF Rosemary 773 RK X ET exhibited by Emily Dahse.

Early Spring Heifer Calves - (10 entries): 1) CF HHF Margie 750 HC X ET exhibited by Jacob Nikkel; 2) KSD CSF Sarah's Lucky Charm 417 ET exhibited by Skylar Ward.; 3) CF SF Demi 760 HC X ET exhibited by Mark Inskeep.

Junior Heifer Calves - (8 entries): 1) SULL Grand Rose Mary 7025E ET exhibited by Colten Anderson; 2) BRH

Proud Fool 1720 exhibited by Caroline Winter; 3) TRN Red Foxy 75 ET exhibited by Gavin D Cender.

Junior Heifer Calves - (6 entries): 1) CF CSF Max Rosa 725 RR X ET exhibited by Sara Sullivan; 2) CF HHF Margie 720 HC X ET exhibited by Cole Whisman; 3) MM Annadelle 28E ET exhibited by Clayton Poppe.

Junior Heifer Calves - (8 entries): 1) SULL Martha's Bo 7974E ET exhibited by Madison McCormick; 2) SFF Nebraska Queen 701 EV exhibited by Miller Smith; 3) SULL Dream Only 7188E ET exhibited by Sara Sullivan.

Winter Heifer Calves - (12 entries): 1) CF Max Rosa 6135 TP ET exhibited by Madalyn Rankin; 2) GCC Homecoming Queen 69 ET exhibited by Collin Britton; 3) Bowman Delilah B607 exhibited by Sarah Parker.

Senior Heifer Calves - (13 entries): 1) CF Dream Lady 6127 AV ET exhibited by Elley Inskeep; 2) AF SL Revival 1648 exhibited by Cyrus Kornegay; 3) WHR Queen Of Hearts 6923 ET exhibited by Alexis Hanson.

Summer Yearling Females - (4 entries): 1) SULL Dream Lady 6969D ET exhibited by Mark Inskeep; 2) M-L FHF Princess Madison exhibited by Wilson Matthews; 3) Smoketown Rama Razz exhibited by Kolton & Danny Powell.

Late Spring Yearling Females - (12 entries): 1) CF CSF Demi 6100 HC ET exhibited by Adrienne Trennepohl; 2) Fancy As Hale PAH 116 exhibited by Blake Pillars; 3) RHS Eldorado Queen 5246 ET exhibited by Alexis Hanson.

Early Spring Yearling Females - (9 entries): 1) LGF Ruby's Hot Emerald exhibited by John Gellerman; 2) SULL Max Rosa Knights 661 ET exhibited by Madison McCormick; 3) SULL Crystal's Lucy 6598D ET exhibited by Kayla Fogg.

Early Spring Yearling Females - (11 entries): 1) CF CSF Demi 650 SOL ET exhibited by Jacob Nikkel; 2) SULL Dream Lady 6197D ET exhibited by Kane Aegerter; 3) SULL Bo's Reward 6325D ET exhibited by Karli Berkheimer.

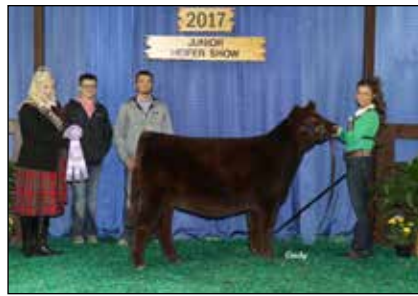
Junior Yearling Females - (5 entries): 1) SULL Red Knight Rose 6452 ET exhibited by Sara Sullivan; 2) SULL Mrytle Bo 6118D ET exhibited by Aaron Lay; 3) PRNL Simply Southern 120 exhibited by Anna Parnell.

Junior Yearling Females - (4 entries): 1) CF CSF Margie 611 HC ET exhibited by Mark Inskeep; 2) BOY Cumberland Q 605 ET exhibited by Brandee Painter; 3) SULL Rose Mary 6056D ET exhibited by Stetson Klise.

Senior Yearling Females - (2 entries): 1) DKSN Muhl Mirage 1027T exhibited by Zach Meyer; 2) SMFC Ginger Snap exhibited by Emily Johnson. □



Late Spring Heifer Calf Champion, CF Max Rosa 7100 HC X ET, exhibited by David Smith, Boulder, Colo.



Late Spring Heifer Calf Reserve Champion & B&O Late Spring Heifer Calf Champion, SS Destinys Halo 796, exhibited by Samantha Schrag, Marion, S.D.



Early Spring Heifer Calf Champion, CF HHH Margie 750 HC X ET, exhibited by Jacob Nikkel, McPhearson, Kan.



Early Spring Heifer Calf Reserve Champion, MFS Simply Diva The Roo 30E ET, exhibited by Reid Utterback, Elwood, Ind.



B&O Early Spring Heifer Calf Reserve Champion, LBT Cindy Beauty 1722 ET, exhibited by Logan Test, Cedarville, Ohio.



Junior Heifer Calf Champion, SULL Martha's Bo 7974E ET, exhibited by Madison McCormick, Dunlap, Iowa.



Junior Heifer Calf Reserve Champion, CF CSF Max Rosa 725 RR X ET, exhibited by Sara Sullivan, Dunlap, Iowa.



B&O Junior Heifer Calf Reserve Champion, TRN Red Foxy 75 ET, exhibited by Gavin Cender, Mahomet, Ill.



Senior Heifer Calf Champion, CF Dream Lady 6127 AV ET, exhibited by Elley Inskeep, Lafayette, Ind.



Senior Heifer Calf Reserve Champion, AF SL Revival 1648, exhibited by Cyrus Kornegay, Tulsa, Okla.



Intermediate Champion Female, CF CSF Demi 6100 HC ET, exhibited by Adrianne Trennepohl, Middletown, Ind.



Reserve Intermediate Champion Female, Fancy As Hale PAH 116, exhibited by Blake Pillars, Martin, Mich.





B&O Intermediate Champion Female, BRH CLF Proud Fool 1620, exhibited by Ben Harner, Xenia, Ohio.



B&O Reserve Intermediate Champion Female, M-L FHF Princess Madison, exhibited by Wilson Matthews, Cartersville, Ga.



Junior Champion Female, CF CSF Demi 650 SOL ET, Jake Nikkel, McPherson, Kan.



Reserve Junior Champion Female, SULL Dream Lady 6197D ET, Kane Aegerter, Seward, Neb.



B&O Junior Champion Female, MM Robjoy Lily 3Z 80D, exhibited by Clayton Poppe, Jerseyville, Ill.



B&O Reserve Junior Champion Female, LGF Ruby's Hot Emerald, exhibited by John Gellerman, Petersburg, Ill.

Pictures not available:

B&O Late Spring Heifer Calf Reserve Champion, Athena Princess's Warrior 1190, exhibited by Mya Hetrick, Fremont, Ohio.

B&O Senior Heifer Calf Champion, VSC Destiny Best Asset 57, exhibited by Molly Williams, Gamaliel, Ky.

B&O Senior Heifer Calf Reserve Champion, MBS Sunshine's Reward 1608, exhibited by Clayton Miller, Beecher City, Ill.

B&O Reserve Senior Champion Female, PRNL Simply Southern 120, exhibited by Anna Parnell, Stanton, Ala.