

# NAILE Junior Shorthorn Show

Judge: Zach Butler, Murfreesboro, Tenn.

by Emily Velisek



Grand Champion Shorthorn Female and Senior Champion Female, was CF CSF Margie 830 AV X ET, exhibited by Mark Inskeep, Lafayette, Ind.



Reserve Grand Champion Shorthorn Female and Junior Champion Female, was NR Quantum Queen 470F RS ET, exhibited by Xavier Ferris, Whiteland, Ind. She also claimed the title of Bred & Owned Grand Champion Shorthorn Female and B&O Junior Champion Female.

On Sunday, November 17, 2019, Zach Butler evaluated the Junior Shorthorn show in Louisville, Kentucky. Butler sorted through 107 purebred females to find his champion.

**Grand Champion Shorthorn Female & Senior Champion Female** honors went to CF CSF Margie 830 AV X ET exhibited by Mark Inskeep of Lafayette, Ind.

**Reserve Grand Champion Shorthorn**

**Female & Junior Champion Female** was NR Quantum Queen 470F RS ET owned by Xavier Ferris of Whiteland, Ind. She also was named **B&O Grand Champion Shorthorn Female and B&O Junior Champion Female.**

**Junior Shorthorn Female Show Division Winners:**

**Late Spring Heifer Calf Champion** - CF CSF Cumberland 9102 HC X ET, Carter Wickard, Wilkinson, Ind.

**Late Spring Heifer Calf Reserve Champion** - Peakview RGLC Gabriella 901 ET, Gabriella Leone, Fowler, Colo.

**B&O Late Spring Heifer Calf Champion** - Peakview RGLC Gabriella 901 ET, Gabriella Leone.

**Early Spring Heifer Calf Champion** - CF HHF Margie HC X ET, Paige Wickard, Wilkinson, Ind.

**Early Spring Heifer Calf Reserve Champion** - CF S/F Margie 998 BW X, Skylar Ward, New Paris, Ohio.

**B&O Early Spring Heifer Calf Champion** - TRN Margie Lola 932, Alexa Turner, Mahomet, Ill.

**B&O Early Spring Heifer Calf Reserve Champion** - Paradise Midge 1903, Caroline Winter, Ashville, Ohio.

**Junior Heifer Calf Champion** - CF V8 Mona Lisa 935 SOL X ET, Miller Smith, Pendleton, Ind.

**Junior Heifer Calf Reserve Champion** - WAT Bobby's Fire Girl 120G, Karly Goetz, Oak Harbor, Ohio.

**B&O Junior Heifer Calf Champion** - GCC Marvelous Margie 96 ET, Kolten Greenhorn, Bellbrook, Ohio.

**B&O Junior Heifer Calf Reserve Champion** - LPA Demi's White Diamond, Kali Ann Rankin, Centerville, Pa.

**Senior Heifer Calf Champion** - GCC Maxim Margie 81 ET, Kolten Greenhorn.

**Senior Heifer Calf Reserve Champion** - Little Cedar Myrtle Bo 1876 ET, Morgan Lehnert, Old Hickory, Tenn.

**B&O Senior Heifer Calf Champion** - GCC Maxim Margie 81 ET, Kolten Greenhorn.

**B&O Senior Heifer Calf Reserve Champion** - LPA Max Rosa, Madalyn Rankin, Centerville, Pa.

**Intermediate Champion Female** - CF Max Rosa 8111 HC X ET, Ryan Wickard, Wilkinson, Ind.

**Reserve Intermediate Champion Female** - Little Cedar Felicia 1830 ET, Benjamin Allen, Saxonburg, Pa.

**B&O Intermediate Champion Female** - Layla's Knighted Pearl 1192, Mya Hetrick, Fremont, Ohio.

**B&O Reserve Intermediate Champion Female** - CJ Bailey's Sapphire, Bailey Jester, Farmland, Ind.

**Reserve Junior Champion Female** - CF CSF Cumberland 880 HC X ET, Jake Nikkel, McPherson, Kan.

**B&O Reserve Junior Champion Female** - Bratcher Myrtle Bo 812 ET, Craig Bratcher, Elizabeth, Ind.

**Reserve Senior Champion Female** -



WHR RHS Ten Queens 2278 ET, Sara Sullivan, Dunlap, Iowa.

**B&O Senior Champion Female - SS** Max Rosa 8036F ET, Samantha Schrag, Marion, S.D.

**Junior Shorthorn Female Show Class Placings:**

**Late Spring Heifer Calves** – (6 entries): 1) CF CSF Cumberland 9102 HC X ET exhibited by Carter Wickard; 2) Peakview RGLC Gabriella 901 ET exhibited by Gabriella Leone; 3) RFSS Fools Delite 151G exhibited by Carson Barnard.

**Early Spring Heifer Calves** – (4 entries): 1) CF S/F Margie 998 BW X exhibited by Skylar Ward; 2) CF Mona Lisa Smile 996 UR X ET exhibited by Ravi Dare; 3) Caligo Pretty Bo exhibited by Kayla Fogg.

**Early Spring Heifer Calves** – (5 entries): 1) CF BF Margie 985 SOL X ET exhibited by Ryan Wickard; 2) Little Cedar Margie 611 AV 1914 ET exhibited by Morgan Lehnert; 3) OLSN

1090 Rockin Revival 04E ET exhibited by Kyia Hendrickson.

**Early Spring Heifer Calves** – (9 entries): 1) CF Sunflower 965 UR X exhibited by Makenzie Laughery; 2) CF Athena 960 EV X exhibited by Kevin Hesser; 3) Little Cedar Missing Mirage RW 1916 ET exhibited by Kolten Greenhorn.

**Early Spring Heifer Calves** – (6 entries): 1) CF HHF Margie 952 HC X ET exhibited by Paige Wickard; 2) PVF Golden Chain 25G exhibited by Derek Miller; 3) TRN Margie Lola 932 exhibited by Alexa Turner.

**Junior Heifer Calves** – (6 entries): 1) CF V8 Mona Lisa 935 SOL X ET exhibited by Miller Smith; 2) CF CSF Dream Lady 945 EV X ET exhibited by Amanda Annett; 3) SFF Hot Cherri 909 HC ET exhibited by Miller Smith.

**Junior Heifer Calves** – (7 entries): 1) CF HHF Margie 922 HC X ET exhibited by Cole Whisman; 2) LPA Demi's White Diamond exhibited by

Kali Ann Rankin; 3) J-F Totally Mona 1911 exhibited by Lindsey Jester.

**Junior Heifer Calves** – (7 entries): 1) WAT Bobby's Fire Girl 120G exhibited by Karly Goetz; 2) CF CSF Cheri 191 HC X ET exhibited by Jackson Harlan; 3) SFF Cumberland 902 AV exhibited by Nathan Hill.

**Junior Heifer Calves** – (5 entries): 1) GCC Marvelous Margie 96 ET exhibited by Kolten Greenhorn; 2) KSD CSF Dynamic Charm 119 ET exhibited by Skylar Ward; 3) MM Dream Lady CPD 3G exhibited by Clayton Poppe.

**Winter Heifer Calves** – (7 entries): 1) GCC Maxim Margie 81 ET exhibited by Kolten Greenhorn; 2) Little Cedar Myrtle Bo 1876 ET exhibited by Morgan Lehnert; 3) SULL Wild Roses 8501F ET exhibited by Fulton Kennedy.

**Senior Heifer Calves** – (9 entries): 1) CF CSF Augusta Pride 8147 EL ET exhibited by Samantha Reese; 2) WHR RHS Demi 9158 ET exhibited by Merideth Behrens; 3) Hahn Elizabeth C43F ET exhibited by John W Cox.

**Summer Yearling Females** – (2 entries): 1) WayMar Drivin Miss Rose exhibited by Alyson Utegg; 2) KNOR Fancy Fawn exhibited by Ally Knore.

**Late Spring Yearling Females** – (5 entries): 1) Little Cedar Felecia 1830 ET exhibited by Benjamin Allen; 2) CF CSF Dream Lady 8120 EV X ET exhibited by Miller Smith; 3) Layla's Knighted Pear 1192 exhibited by Mya Hetrick.


**Late Spring Yearling Females** – (6 entries): 1) CF Max Rosa 8111 HC X ET exhibited by Ryan Wickard; 2) SULL Red Red Roses 8311F ET exhibited by John Gellerman; 3) CCS Katrina 503F exhibited by Dalton Johnston.

**Early Spring Yearling Females** – (4 entries): 1) ABEN Scarlett 801F ET exhibited by Abree Belcher; 2) BM Reba RO18 exhibited by Ridge Wendling; 3) CF NNN Augusta Pride 8102 EV exhibited by Alyssa Carter.

**Early Spring Yearling Females** – (7 entries): 1) NR Quantum Queen 470F RS ET exhibited by Xavier Ferris; 2) CF CSF Cumberland 880 HC X ET exhibited by Jake Nikkel; 3) Bratcher Myrtle Bo 812 ET exhibited by Craig Bratcher.

**Junior Yearling Females** – (7 entries): 1) CF CSF Margie 830 AV X ET exhibited by Mark Inskeep; 2) WHR RHS Ten Queens 2278 ET exhibited by Sara Sullivan; 3) CF Mona Madness 835 BW X ET exhibited by Katie Fry.

**Junior Yearling Females** – (4 entries): 1) Steck Chelsie BS 801 ET exhibited by Sara Sullivan; 2) SULL Max Rosa 8036F ET exhibited by Kendall Nelson; 3) SS Max Rosa Rumor ET exhibited by Samantha Schrag.

**Senior Yearling Females** – (1 entry): 1) WHR Queen of Sonny 7N15 ET exhibited by Carolyn Norris. 



Late Spring Heifer Calf Champion - CF CSF Cumberland 9102 HC X ET, Carter Wickard, Wilkinson, Ind.



Late Spring Heifer Calf Reserve Champion & B&O Late Spring Heifer Calf Champion - Peakview RGLC Gabriella 901 ET, Gabriella Leone, Fowler, Colo.



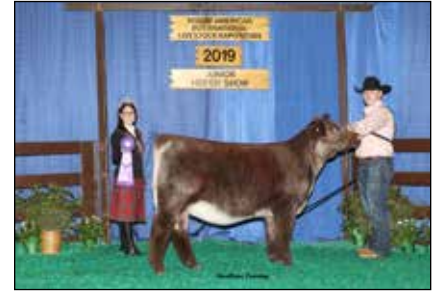
Early Spring Heifer Calf Champion - CF HHF Margie HC X ET, Paige Wickard, Wilkinson, Ind.



Early Spring Heifer Calf Reserve Champion - CF SIF Margie 998 BW X, Skylar Ward, New Paris, Ohio.



B&O Early Spring Heifer Calf Champion - TRN Margie Lola 932, Alexa Turner, Mahomet, Ill.



Junior Heifer Calf Champion - CF V8 Mona Lisa 935 SOL X ET, Miller Smith, Pendleton, Ind.



Junior Heifer Calf Reserve Champion - WAT Bobby's Fire Girl 120G, Karly Goetz, Oak Harbor, Ohio.



B&O Junior Heifer Calf Champion - GCC Marvelous Margie 96 ET, Koltan Greenhorn, Bellbrook, Ohio.



B&O Junior Heifer Calf Reserve Champion - LPA Demi's White Diamond, Kali Ann Rankin, Centerville, Pa.



Senior Heifer Calf Champion & B&O Senior Heifer Calf Champion - GCC Maxim Margie 81 ET, Koltan Greenhorn, Bellbrook, Ohio..



Senior Heifer Calf Reserve Champion - Little Cedar Myrtle Bo 1876 ET, Morgan Lehnert, Old Hickory, Tenn.

Pictures not available:

B&O Early Spring Heifer Calf Reserve Champion - Paradise Midge 1903, Caroline Winter, Ashville, Ohio.

B&O Senior Heifer Calf Reserve Champion - LPA Max Rosa, Madalyn Rankin, Centerville, Pa.

Reserve Senior Champion Female - WHR RHS Ten Queens 2278 ET, Sara Sullivan, Dunlap, Iowa.

B&O Senior Champion Female - SS Max Rosa 8036F ET, Samantha Schrag, Marion, S.D.





*Intermediate Champion Female - CF  
Max Rosa 8111 HC X ET, Ryan Wickard,  
Wilkinson, In.*



*Reserve Intermediate Champion Female - Little  
Cedar Felicia 1830 ET, Benjamin Allen,  
Saxonburg, Pa.*



*B&O Intermediate Champion Female - Layla's  
Knighted Pearl 1192, Mya Hetrick, Fremont,  
Ohio.*



*B&O Reserve Intermediate Champion Female  
- CJ Bailey's Sapphire, Bailey Jester, Farmland,  
Ind.*



*Reserve Junior Champion Female - CF CSF  
Cumberland 880 HC X ET, Jake Nikkel,  
McPherson, Kan.*



*B&O Reserve Junior Champion Female -  
Bratcher Myrtle Bo 812 ET, Craig Bratcher,  
Elizabeth, Ind.*