

NAILE Junior Shorthorn Show

Judge: Parker Henley, Oklahoma

by Emily Velisek



Grand Champion Shorthorn Female and Junior Heifer Calf Champion, was CF CSF Crystals Swan 015 EV X ET, exhibited by Houston Ferree, Sullivan, Ind.



Reserve Grand Champion Shorthorn Female and Junior Champion Female, was LGF Ruby Knights 9360G, exhibited by John Gellerman, Petersburg, Ill. She also claimed the title of Bred & Owned Grand Champion Shorthorn Female.

On Sunday, November 15, 2020, Parker Henley evaluated the Junior Purebred Shorthorn show in Louisville, KY. Henley sorted through 111 Purebred Females to find his Champion.

Grand Champion Shorthorn Female & Junior Heifer Calf Champion honors went to CF CSF Crystals Swan 015 EV X ET shown by Houston Ferree of Sullivan, Ind.

Reserve Grand Champion

Shorthorn Female & Junior Champion Female was LGF Ruby Knights 9360G owned by John Gellerman of Petersburg, Ill. She also was named **B&O Grand Champion Shorthorn Female.**

Junior Shorthorn Female Show Division Winners:

Late Spring Heifer Calf Champion - CF Mona Lisa 099 SOL X ET, Makenzie Laughery, Royse City, Texas.

Late Spring Heifer Calf Reserve

Champion - SFF Mona Lisa 043 I, Evelyn Hill, Yorktown, Ind.

Early Spring Heifer Calf Champion - CF CSF Margie 058 HC X ET, Paige Wickard, Wilkinson, Ind.

Early Spring Heifer Calf Reserve Champion - SFF Caroline 017 W ET, Skylar Ward, New Paris, Ohio.

Junior Heifer Calf Reserve Champion - CF CSF Cherri 036 X ET, Carter Wickard, Wilkinson, Ind.

Senior Heifer Calf Champion - CF Veronica 9124 SOL X ET, Jackson Harlan, Bells, Texas.

Senior Heifer Calf Reserve Champion - CF CSF Cumberland 9128 AV X ET, McKala Grauel, Ridgeway, Ohio.

Intermediate Champion Female - Steck WSCC Chelsie HC 911G, Keagan Steck, Woodstock, Minn.

Reserve Intermediate Champion Female - CF CSF Cumberland 9102 HC X ET, Carter Wickard.

Reserve Junior Champion Female - BFS Margie LL 950, Mikayla Wetzel, Faribault, Minn.

Senior Champion Female - CF V8 Mona Lisa 935 SOL X ET, Miller Smith, Pendleton, Ind.

Reserve Senior Champion Female - GCC Marvelous Margie 96 ET, Kolten Greenhorn, Bellbrook, Ohio.

Junior Shorthorn Female Show Class Placings:

Late Spring Heifer Calves - (6 entries): 1) CF Mona Lisa 099 SOL X ET exhibited by Makenzie Laughery; 2) SFF Mona Lisa 043 I exhibited by Evelyn Hill; 3) TILT Cindy Beauty 11K ET exhibited by Caroline Tilton.

Early Spring Heifer Calves - (6 entries): 1) CF S/F Margie 093 SOL X ET exhibited by Keagan McGrew; 2) BFC KES Sable H109; 3) BFC Royal Ruby EE 064 ET exhibited by Emily Bollum.

Early Spring Heifer Calves - (5 entries): 1) MFS Crystal's Lu Lu 43 H ET exhibited by Reid Utterback; 2) CF Rosebud 090 UH X exhibited by Ryan Wickard; 3) NR Red Carmele 619H exhibited by Alyssa Miller.

Early Spring Heifer Calves - (3 entries): 1) Steck Chelsie RM 014 exhibited by Rosemary Thompson; 2) CF Crystal's Lucy 073 RK X ET exhibited by Reed Schumacher; 3) NR Quantum Queen 423H ET exhibited by Reagan Ferris.

Early Spring Heifer Calves - (6 entries): 1) SHOUF Starlight UH 2010 exhibited by Charli Bay Tapscott; 2)



CSF Margie 2119 HC ET exhibited by Cheyenne Kiser; 3) BFC Dividend Fool H077 ET exhibited by Emily Adams.

Early Spring Heifer Calves – (8 entries): 1) CF CSF Margie 058 HC X ET exhibited by Paige Wickard; 2) SFF Caroline 017 W ET exhibited by Skylar Ward; 3) DKSJN Ten Queens 303 Brextyn Grabiell.

Junior Heifer Calves – (4 entries): 1) CF Mirage 050 EL X ET exhibited by Mckala Grauel; 2) J-F SFF Mona Lisa Reward 2011 S ET exhibited by Emily Dahse; 3) DKSJN Max Rosa 226 exhibited by Mckala Grauel.

Junior Heifer Calves – (5 entries): 1) CF CSF Cherri 036 X ET exhibited by Carter Wickard; 2) DF/CCC Omaha Queen exhibited by Ethan McMichael; 3) CF CSF Mona Lisa Smile 038 X ET exhibited by Abby Allred.

Junior Heifer Calves – (5 entries): 1) DVW Pretty Perfect 230 exhibited by Megan Keeney; 2) CSF Mona's Solution 2111 ET exhibited by Skylar Ward; 3) CF HHF Margie 034 HC X ET exhibited by Ravi Dare.

Junior Heifer Calves – (6 entries): 1) CF CSF Crystals Swan 015 EV X ET exhibited by Houston Ferree; 2)

J-F Mona Lisa Reward 2014 SOL ET exhibited by Rylan Jester; 3) Hahn Elizabeth C3H ET exhibited by Paige Van Dyke.

Junior Heifer Calves – (5 entries): 1) CF Mona Lisa 002 SOL X ET exhibited by Alyssa Carter; 2) CSF Demi 2103 LL ET exhibited by Maggie Potter; 3) CSF Lady Trump 2106 ET exhibited by Jaedyn Richards.

Winter Heifer Calves – (7 entries): 1) BARR Augusta Pride 1905 exhibited by Brandon Barr; 2) R-C Jazzy Felecia 967 ET exhibited by Piper Campbell; 3) FF/DL White Crystaleen 37G ET exhibited by Emily Dahse.

Senior Heifer Calves – (8 entries): 1) CF Veronica 9124 SOL X ET exhibited by Jackson Harlan; 2) CF CSF Cumberland 9128 A V X ET exhibited by Mckala Grauel; 3) R-C BRCC Proud Revival 910 exhibited by Addison Campbell.

Summer Yearling Females – (2 entries): 1) Bratcher Mona Lisa 932 exhibited by Abby Bratcher; 2) RSF Maxx Lady 20G exhibited by Alyson Utegg.

Late Spring Yearling Females – (5 entries): 1) Little Cedar Felecia 1830 ET exhibited by Benjamin Allen; 2) CF CSF Dream Lady 8120 EV X ET exhibited by Miller Smith; 3) Layla's Knighted Pear 1192 exhibited by Mya Hetrick.

Late Spring Yearling Females – (8 entries): 1) Steck WSCC Chelsie HC 911G exhibited by Keagan Steck; 2) CF CSF Cumberland 9102 HC X ET exhibited by Carter Wickard; 3) SS Max Rosa 973 ET exhibited by Samantha Schrag.

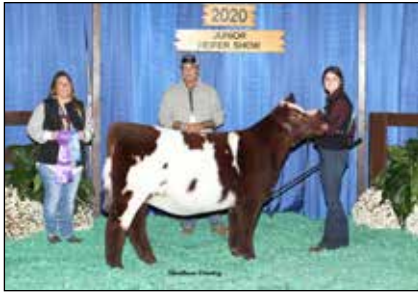
Early Spring Yearling Females – (6 entries): 1) LGF Ruby Knights 9360G ET exhibited by John Gellerman; 2) BFS Margie LL 950 exhibited by Mikayla Wetzel; 3) CF S/F Margie 998 BW X exhibited by Skylar Ward.

Early Spring Yearling Females – (8 entries): 1) SULL LGF Ruby Knights 9362G ET exhibited by Reid Utterback; 2) SULL Sweet Dreams 9134G ET exhibited by Abigail Burkhart; 3) NF Fool Me Later exhibited by Kendall Nelson.

Junior Yearling Females – (7 entries): 1) CF V8 Mona Lisa 935 SOL X ET exhibited by Miller Smith; 2) SULL MFS Dreamin Big 9203G ET exhibited by Avery Wood; 3) CF CSF Demi 930 HC X ET exhibited by Alyssa Carter.

Junior Yearling Females – (4 entries): 1) GCC Marvelous Margie 96 ET exhibited by Kolten Greenhorn; 2) LDB Mirage Premium Brave 901 exhibited by Lane Blankinship; 3) WAT Bobby's Fire Girl 120G exhibited by Karly Goetz.

Senior Yearling Females – (2 entries): 1) Hahn Elizabeth C43F ET exhibited by John Cox; 2) SULL Wild Roses 8501F ET exhibited by Fulton Kennedy.



Late Spring Heifer Calf Champion - CF Mona Lisa 099 SOL X ET, Makenzie Laughery, Roysce City, Texas.



Late Spring Heifer Calf Reserve Champion - SFF Mona Lisa 043 I, Evelyn Hill, Yorktown, Ind.



Early Spring Heifer Calf Champion - CF CSF Margie 058 HC X ET, Paige Wickard, Wilkinson, Ind.



Early Spring Heifer Calf Reserve Champion - SFF Caroline 017 W ET, Skylar Ward, New Paris, Ohio.



Junior Heifer Calf Reserve Champion - CF CSF Cherri 036 X ET, Carter Wickard, Wilkinson, Ind.



Senior Heifer Calf Champion - CF Veronica 9124 SOL X ET, Jackson Harlan, Bells, Texas.



Senior Heifer Calf Reserve Champion - CF CSF Cumberland 9128 AV X ET, McKala Grauel, Ridgeway, Ohio.



Intermediate Champion Female - Steck WSCC Chelsie HC 911G, Keagan Steck, Woodstock, Minn.



Reserve Intermediate Champion Female - CF CSF Cumberland 9102 HC X ET, Carter Wickard, Wilkinson, Ind.



Reserve Junior Champion Female - BFS Margie LL 950, Mikayla Wetzel, Faribault, Minn.



Senior Champion Female - CF V8 Mona Lisa 935 SOL X ET, Miller Smith, Pendleton, Ind.



Reserve Senior Champion Female - GCC Marvelous Margie 96 ET, Koltan Greenhorn, Bellbrook, Ohio.

