

Jack C. Ragsdale National Shorthorn Show

Open Purebred Show :: Judge: Jason Elmore, Oklahoma

by Emily Velisek



Grand Champion Shorthorn Bull and Junior Champion Bull, was SULL Dream Maker 9141G ET, exhibited by Sara Sullivan, Dunlap, Iowa.



Grand Champion Shorthorn Female & Junior Heifer Calf Champion, was CF CSF Crystals Swan 015 EV X ET, exhibited by Houston Ferree, Sullivan, Ind. She was also named Supreme Champion.

The 2020 NAILE may have looked a little different this year but Shorthorn exhibitors really showed up and continued the quality this breed has showed in the past. The red, white and roan certainly was not missed in the barns. The National Shorthorn Show was Monday, November 16th in Freedom Hall following the ShorthornPlus Show. Judge Jason Elmore sorted through 18 bulls and 119 females to find his

champions.

Grand Champion Shorthorn Bull and Junior Champion Bull honors went to SULL Dream Maker 9141G ET owned by Sara Sullivan of Dunlap, Iowa.

CF S/F Upper Hand X ET was named **Reserve Grand Champion Shorthorn Bull and Senior Champion Bull**, owned by Cates Farms of Modoc, Ind., Simon Farms of Rockford, Ohio & Shouffer Shorthorns of Fortville, Ind.

Grand Champion Shorthorn Female and Junior Heifer Calf Champion, honors went to CF CSF Crystals Swan 015 EV X ET exhibited by Houston Ferree of Sullivan, Ind. At the end of the show, she competed against the Grand Champion Shorthorn bull and was awarded the title of **Supreme Champion**.

Reserve Grand Champion Shorthorn Female and Intermediate Champion Female was Steck WSCC Chelsie HC 911G shown by Keagan Steck of Woodstock, Minn.

Division Winners:
Open Purebred Bull Show Divisions:

Early Spring Bull Calf Champion - CF Maskerade 070 BW X, Cates Farms & LSA Shorthorns, Royse City, Texas.

Early Spring Bull Calf Reserve Champion - CCS Red Reign 410H, Don Cagwin, Virginia, Ill.

Junior Bull Calf Champion - SFF Ragweed 003 B ET, Miller Smith, Pendleton, Ind.

Junior Bull Calf Reserve Champion - Hahn CL Chaos S21H, Mitch Clodfelter, Sterling, Ill.

Senior Bull Calf Champion - WHR Ghost Rider 9004, Caitlyn Rasor, Van Alstyne, Texas & Cameron Fallon, Tom Bean, Texas.

Senior Bull Calf Reserve Champion - CFS Ghost Rider 123G, Clark Farms Shorthorns, Pleasantville, Iowa.

Senior Reserve Champion Bull - Hahn Surprise Me C17F, Bright Lights Show Cattle, Beloit, Wis & Hahn Family Shorthorns, Minonk, Ill.

Open Purebred Female Show Divisions:

Late Spring Heifer Calf Champion - CF Mona Lisa 099 SOL X ET exhibited by Makenzie Laughery, Royse City, Texas.

Late Spring Heifer Calf Reserve Champion - Double C Myrtle Bo 09, Alexa Turner, Mahomet, Ind.

Early Spring Heifer Calf Champion - CSF Dream Lady 2118 AV ET, Cornerstone Farms, Winchester, Ind.

Early Spring Heifer Calf Reserve Champion - TAD Margie's Royal Commodity 5H ET, Kolten Greenhorn, Bellbrook, Ohio.

Junior Heifer Calf Reserve Champion - CF Mona Lisa 002 SOL X ET, Alyssa Carter, Oregonia, Ohio.

Senior Heifer Calf Champion - CF Veronica 9124 SOL X ET, Jackson Harlan, Bells, Texas.

Senior Heifer Calf Reserve Champion - WHR SRVM Cecilia 9910



Reserve Grand Champion Shorthorn Bull & Senior Champion Bull was CF S/F Upper Hand X ET, owned by Cates Farms, Modoc, Ind., Simon Farms, Rockford, Ohio & Shoufler Shorthorns, Fortville, Ind..



Reserve Grand Champion Shorthorn Female & Intermediate Champion Female was Steck WSCC Chelsie HC 911G, owned by Keagan Steck, Woodstock, Minn.

ET, Carolyn Norris, Rowlett, Texas.

Reserve Intermediate Champion Female - CF Crystals Lucy 9100 RK X ET, Simon Farms.

Junior Champion Female - BFS Margie LL 950, Mikayla Wetzel, Faribault, Minn.

Reserve Junior Champion Female - SULL LGF Ruby Knights 9362G ET, Reid Utterback, Elwood, Ind.

Senior Champion Female - CF V8 Mona Lisa 935 SOL X ET, Miller Smith.

Reserve Senior Champion Female - GCC Marvelous Margie 96 ET, Kolten Greenhorn.

Cow/Calf Champion - JS Rose 6J05, Drake Penrod, Jonesboro, Ill.

Class Placings:

Open Purebred Bull Class Placings:
Early Spring Bull Calves - (3 entries):

- 1) CF Maskerade 070 BW X exhibited by Cates Farms & LSA Shorthorns; 2) CCS Red Reign 410H exhibited by Don Cagwin; 3) GM Tribune 84H exhibited by Anna Bratsven.

Junior Bull Calves - (7 entries): 1) SFF Ragweed 003 B ET exhibited by Miller Smith; 2) Hanh CL Chaos S21H exhibited by Mitch Clodfelter; 3) SS SL Train Station 010 exhibited by Samantha Schrag.

Winter Bull Calves - (2 entries): 1) Rexplaine Gretsky 15G exhibited by Rex Tribbett; 2) Crowe Foundation exhibited by Nolan Crowe.

Senior Bull Calves - (3 entries): 1) WHR Ghost Rider 9004 exhibited by Caitlyn Razor & Cameron Fallon; 2) CFS Ghost Rider 123G exhibited by Clark Farms Shorthorns; 3) MM Sancho 99G exhibited by Clayton Poppe.

Junior Yearling Bulls - (1 entry): 1) SULL Dream Maker 9141G ET exhibited by Sara Sullivan.

Senior Yearling Bulls - (1 entry): 1) Hahn Hot Mess R44F exhibited by Ellerbusch Farms.

Two-Year Old Bulls - (2 entries): 1) CF S/F Upper Hand X ET exhibited by Cates Farms, Simon Farms & Shoufler

Shorthorns; 2) Hahn Surprise Me C17F exhibited by Bright Lights Show Cattle & Hahn Family Shorthorns.

Open Purebred Female Class Placings:

Late Spring Heifer Calves - (6 entries): 1) CF Mona Lisa 099 SOL X ET exhibited by Makenzie Laughery; 2) Double C Myrtle Bo 09 exhibited by Alexa Turner; 3) SFF Mona Lisa 043 I exhibited by Evelyn Hill.

Early Spring Heifer Calves - (4 entries): 1) CF Mona Lisa 098 SOL X ET exhibited by Mallory Inskip; 2) BFS Royal Ruby EE 064 ET exhibited by Emily Bollum; 3) Chey Max Bo 04MX ET exhibited by Cheyenne Cattle Company.

Early Spring Heifer Calves - (7 entries): 1) CF Rosebud 090 UH X exhibited by Ryan Wickard; 2) MFS Crystal's Lu Lu 43 H ET exhibited by Reid Utterback; 3) CF S/F Margie 093 SOL X ET exhibited by Keegan McGrew.

Early Spring Heifer Calves - (6 entries): 1) Agle Jazzy 20 ET exhibited by Kyia Hendrickson; 2) CSF Dream Lady 2122 HC exhibited by Lindsey Jester; 3) Highland Pat 053 exhibited by Cooper Laughery.

Early Spring Heifer Calves - (8 entries): 1) CSF Dream Lady 2118 AV ET exhibited by Cornerstone Farms; 2) TAD Margie's Royal Commodity 5H ET exhibited by Kolten Greenhorn; 3) CF Crystal's Lucy 073 RK X ET exhibited by Reed Schumacher.

Early Spring Heifer Calves - (7 entries): 1) SFF Caroline 017 W ET exhibited by Skylar Ward; 2) CF CSF Mona Lisa Smile 064 HC X ET exhibited by Cornerstone Farms; 3) CLF Miss Margie 204 ET exhibited by Karly Goetz.

Early Spring Heifer Calves - (9 entries): 1) SS Max Rosa 029 ET exhibited by Schrag Shorthorn Farms; 2) SS Max Rosa Magic 019 ET exhibited by Cash Lehrman; 3) Millers Missing

Aviator ET exhibited by Desirae Logsdon.

Junior Heifer Calves - (5 entries): 1) CF Mirage 050 EL X ET exhibited by Mckala Grauel; 2) SS Missing Mirage Miami 013 ET exhibited by Rick Hogue; 3) J-F SFF Mona Lisa Reward 2011 S ET exhibited by Emily Dahse.

Junior Heifer Calves - (5 entries): 1) Peakview Alaska 2001 ET exhibited by Peak View Ranch, Inc.; 2) BONL Simple Pride 004H ET exhibited by Maddox Reedy; 3) CF/CCC Omaha Queen exhibited by Ethan McMichael.

Junior Heifer Calves - (7 entries): 1) CF CSF Cherri 036 X ET exhibited by Carter Wickard; 2) GCC Current Margie 202 ET exhibited by Callie Turner; 3) CSF Mona's Solution 2111 ET exhibited by Skylar Ward.

Junior Heifer Calves - (7 entries): 1) CF CSF Crystals Swan 015 EV X ET exhibited by Houston Ferree; 2) J-F Mona Lisa Reward 2014 SOL ET exhibited by Rylan Jester; 3) Hahn Elizabeth C3H ET exhibited by Paige Van Dyke.

Junior Heifer Calves - (7 entries): 1) CF Mona Lisa 002 SOL X ET exhibited by Alyssa Carter; 2) MM Pat 6H exhibited by Clayton Poppe; 3) PRNL Augusta Pride 0103 EV ET exhibited by Charli Bay Tapscott.

Winter Heifer Calves - (7 entries): 1) RSF Glamour Girl 19G exhibited by Kimberly Holland; 2) BARR Augusta Pride 1905 exhibited by Brandon Barr; 3) FF/DL White Crystaleen 37G ET exhibited by Emily Dahse.

Senior Heifer Calves - (7 entries): 1) CF Veronica 9124 SOL X ET exhibited by Jackson Harlan; 2) WHR SRVM Cecilia 9910 ET exhibited by Carolyn Norris; 3) CF CSF Cumberland 9128 AV X ET exhibited by Mckala Grauel.

Summer Yearling Females - (2 entries): 1) Bratcher Mona Lisa 932 exhibited by Abby Bratcher; 2) RSF Maxx Lady 20G exhibited by Alyson Utegg.



Early Spring Bull Calf Champion - CF Maskerade 070 BW X, Cates Farms & LSA Shorthorns, Royse City, Texas.



Early Spring Bull Calf Reserve Champion - CCS Red Reign 410H, Don Cagwin, Virginia, Ill.



Junior Bull Calf Champion - SFF Ragweed 003 B ET, Miller Smith, Pendleton, Ind.



Junior Bull Calf Reserve Champion - Hahn CL Chaos S21H, Mutch Clodfelter, Sterling, Ill.



Senior Bull Calf Champion - WHR Ghost Rider 9004, Caitlyn Rasor, Van Alstyne, Texas & Cameron Fallon, Tom Bean, Texas.



Senior Bull Calf Reserve Champion - CFS Ghost Rider 123G, Clark Farms Shorthorns, Pleasantville, Iowa.



Senior Reserve Champion Bull - Hahn Surprise Me C17E, Bright Lights Show Cattle, Beloit, Wis & Hahn Family Shorthorns, Minonk, Ill.



Late Spring Yearling Females – (4 entries): 1) Steck WSCC Chelsie HC 911G exhibited by Keagan Steck; 2) CF S/F Margie 998 BW X exhibited by Skylar Ward; 3) LGF Ruby Knights 9360G ET exhibited by John Gellerman.

Early Spring Yearling Females – (4 entries): 1) BFS Margie LL 950 exhibited by Mikayla Wetzel; 2) CF S/F Margie 998 BW X exhibited by Skylar Ward; 3) LGF Ruby Knights 9360G ET exhibited by John Gellerman.

Early Spring Yearling Females – (7 entries): 1) SULL LGF Ruby Knights 9362G ET exhibited by Reid Utterback; 2) CF HHF Margie 952 HC X ET exhibited by Paige Wickard; 3) CF Sunflower 965 UR X exhibited by Makenzie Laughery.

Junior Yearling Females – (6 entries):

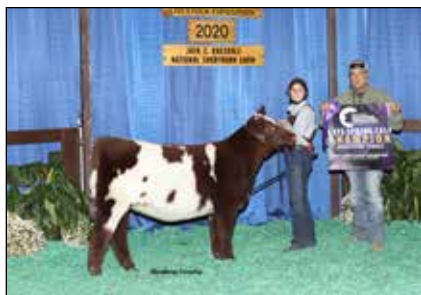
1) CF V8 Mona Lisa 935 SOL X ET exhibited by Miller Smith; 2) SULL MFS Dreamin Big 9203G ET exhibited by Avery Wood; 3) SULL Ransom Rose 9143G ET exhibited by Mya Lenke Hetrick.

Junior Yearling Females – (3 entries): 1) GCC Marvelous Margie 96 ET exhibited by Koltan Greenhorn; 2) LDB Mirage Premium Brave 901 exhibited by Lane Blankinship; 3) Hill Haven Pretty Rose 2G ET exhibited by Kaitlyn Broughton.

Senior Yearling Females – (2 entries): 1) Hahn Elizabeth C43F ET exhibited by John W Cox; 2) SULL Wild Roses 8501F ET exhibited by Fulton Kennedy.

Three-Four Year Old Cow/Calf Pairs – (1 entry): 1) JS Rose 6J05 exhibited by Drake Penrod. ☐





Late Spring Heifer Calf Champion - CF Mona Lisa 099 SOL X ET exhibited by Makenzie Laughery, Royse City, Texas.



Late Spring Heifer Calf Reserve Champion - Double C Myrtle Bo 09, Alexa Turner, Mahomet, Ind.



Early Spring Heifer Calf Champion - CSF Dream Lady 2118 AV ET, Cornerstone Farms, Winchester, Ind.



Early Spring Heifer Calf Reserve Champion - TAD Margie's Royal Commodity 5H ET, Kolten Greenhorn, Bellbrook, Ohio.



Junior Heifer Calf Reserve Champion - CF Mona Lisa 002 SOL X ET, Alyssa Carter, Oregonia, Ohio.



Senior Heifer Calf Champion - CF Veronica 9124 SOL X ET, Jackson Harlan, Bells, Texas.



Senior Heifer Calf Reserve Champion - WHR SRVM Cecilia 9910 ET, Carolyn Norris, Rowlett, Texas.



Reserve Intermediate Champion Female - CF Crystals Lucy 9100 RK X ET, Simon Farms.



Junior Champion Female - BFS Margie LL 950, Mikayla Wetzel, Faribault, Minn.



Reserve Junior Champion Female - SULL LGF Ruby Knights 9362G ET, Reid Utterback, Elwood, Ind.



Senior Champion Female - CF V8 Mona Lisa 935 SOL X ET, Miller Smith, Pendleton, Ind.



Reserve Senior Champion Female - GCC Marvelous Margie 96 ET, Kolten Greenhorn, Bellbrook, Ohio.



Cow/Calf Champion - JS Rose 6J05, Drake Penrod, Jonesboro, Ill.

