

Shorthorn Pen Shows Strong at Cattlemen's Congress

Shorthorn & ShorthornPlus Pens :: Judge: Scott Werning, Emery, S.D.

by Matt Woolfolk

Forty-eight head of Shorthorn and ShorthornPlus cattle were exhibited in fourteen pens during the National Shorthorn Pen Show at the 2021 Cattlemen's Congress in Oklahoma City. Judge Scott Werning of Werning Cattle Company in South Dakota praised breeders for bringing pens with uniformity, excellent phenotypic quality, and strong genetic documentation.

In the ShorthornPlus show, Stepping Stone Ranch of Edson, KS exhibited the Champion Pen of 3 heifers. This pen of July-born red heifers, all sired by SSRB MR Man 104 2017, averaged 522 lb and a WDA of 2.99. Reserve Champion Pen of 3 heifers went to Lakeside Farms of Hersey, MI. This pen of April and May calves averaged 600 lb and a WDA of 2.41

Jungels Shorthorn Farm of Kathryn, ND took home Champion Pen of 3 honors in the ShorthornPlus bull show. These black-hided spring bull calves weighed in at a 935 lb average with a WDA of 3.02.

In the Shorthorn Pen of 3 heifer show, Pearl Valley Shorthorns (Valley City, ND) exhibited the champion pen for the third year in a row. The Vachal family brought a trio of white heifers to OKC. These late March heifers averaged 765 lb with a WDA of 2.66. The pick of this pen of heifers sold in The Summit sale the following evening and was a hotly contested lot with plenty of bidding interest.

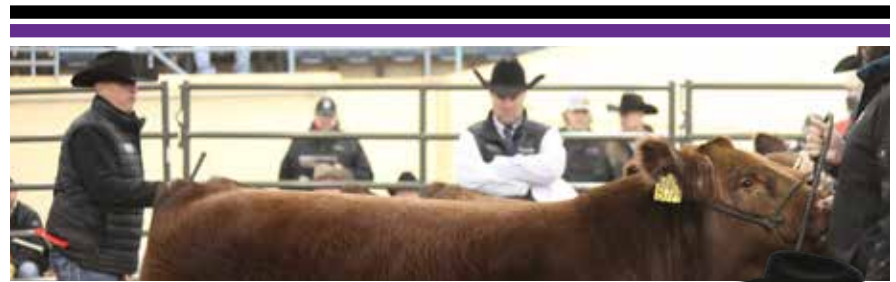
In the Shorthorn bull show, Paint Valley Farms of Millersburg, OH exhibited the Champion Pen of 5 with their junior bull calf entry. The bulls averaged 1040 pounds and a WDA of 3.24. Reserve Champion honors went to Jungels Shorthorn Farm with the winning pen from the spring bull calf class. These March bulls weighed in at 971 lb with a WDA of 3.18.

The final show of the morning was the Shorthorn Pen of 3 bull division. Jungels Shorthorn Farm took home champion honors with a trio of spring bull calves. All three bulls crossed the scales at 1000 lb each and a WDA of 3.38. Reserve Champion Pen of 3 went to Gilman Shorthorns of Stuart, Iowa. The winners of the junior bull calf class,

these bulls averaged 1138 lb with a WDA of 3.23.

Thank you to all the breeders who made the trip to Oklahoma City to exhibit their pen cattle at the Cattlemen's Congress. It was an outstanding exhibition with a good crowd ringside analyzing the cattle. If

a breeder couldn't find a herd sire that could fit the needs of their breeding program while in OKC, I'm not sure that bull can be found anywhere! Data and results for all the pen cattle are on the following pages. We look forward to another exciting National Pen Show in 2022! @





*Grand Champion Pen of 3 ShorthornPlus Heifers -
Stepping Stone Ranch, Edson, Kan.*



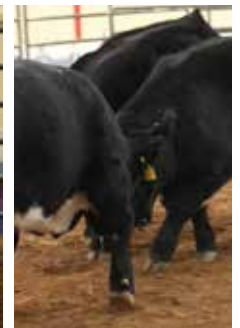
*Reserve Grand Champion Pen of 3 ShorthornPlus Heifers -
Lakeside Farms, Hersey, Mich.*



*Grand Champion Pen of 3 ShorthornPlus Bulls -
Jungels Shorthorn Farm, Kathryn, N.D.*



*Grand Champion Pen of 3 Shorthorn Heifers -
Pearl Valley Shorthorns, Valley City, N.D.*





*Grand Champion Pen of 5 Shorthorn Bulls -
Paint Valley Farms, Millersburg, Ohio*



*Reserve Grand Champion Pen of 5 Shorthorn Bulls -
Jungels Shorthorn Farm, Kathryn, N.D.*



*Grand Champion Pen of 3 Shorthorn Bulls -
Jungels Shorthorn Farm, Kathryn, N.D.*



*Reserve Grand Champion Pen of 3 Shorthorn Bulls -
Gilman Shorthorns, Stuart, Iowa*





ShorthornPlus Pen Show

Table with columns: Placing, Animal, DOB, Sire, WT, WDA, FS, SC, Ultrasound (REA, IMF, FT, R/100), EPD's (CE, BW, WW, YW, M, CEM, ST, CW, REA, MB), \$VALUES (\$CEZ, \$BMI, \$F). Includes sub-headers for Non-parent Breed Average EPDs and Class 21: ShorthornPlus Pen of 3 Spring Heifer Calves.

Table with columns: Placing, Animal, DOB, Sire, WT, WDA, FS, SC, Ultrasound (REA, IMF, FT, R/100), EPD's (CE, BW, WW, YW, M, CEM, ST, CW, REA, MB), \$VALUES (\$CEZ, \$BMI, \$F). Includes sub-headers for Non-parent Breed Average EPDs and Class 15: ShorthornPlus Pen of 3 Spring Bull Calves.

Shorthorn Pen Show

Table with columns: Placing, Animal, DOB, Sire, WT, WDA, FS, SC, Ultrasound (REA, IMF, FT, R/100), EPD's (CE, BW, WW, YW, M, CEM, ST, CW, REA, MB), \$VALUES (\$CEZ, \$BMI, \$F). Includes sub-headers for Non-parent Breed Average EPDs and Class 17: Shorthorn Pen of 3 Spring Heifer Calves.

Table with columns: Placing, Animal, DOB, Sire, WT, WDA, FS, SC, Ultrasound (REA, IMF, FT, R/100), EPD's (CE, BW, WW, YW, M, CEM, ST, CW, REA, MB), \$VALUES (\$CEZ, \$BMI, \$F). Includes sub-headers for Non-parent Breed Average EPDs, Class 1: Shorthorn Pen of 5 Spring Bull Calves, and Class 2: Shorthorn Pen of 5 Junior Bull Calves.

